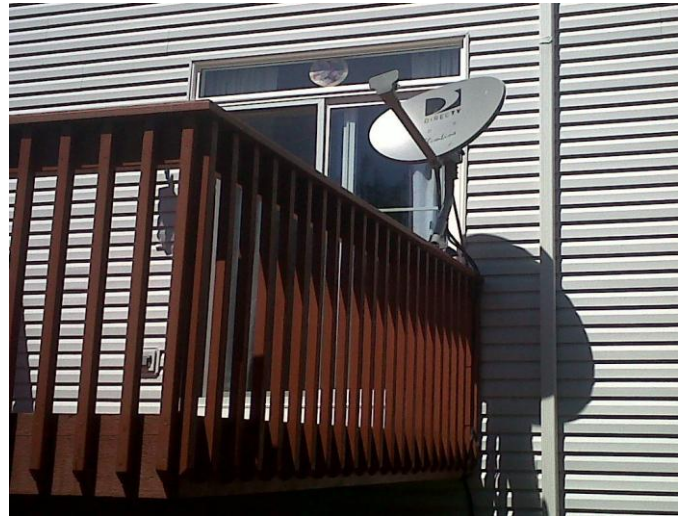
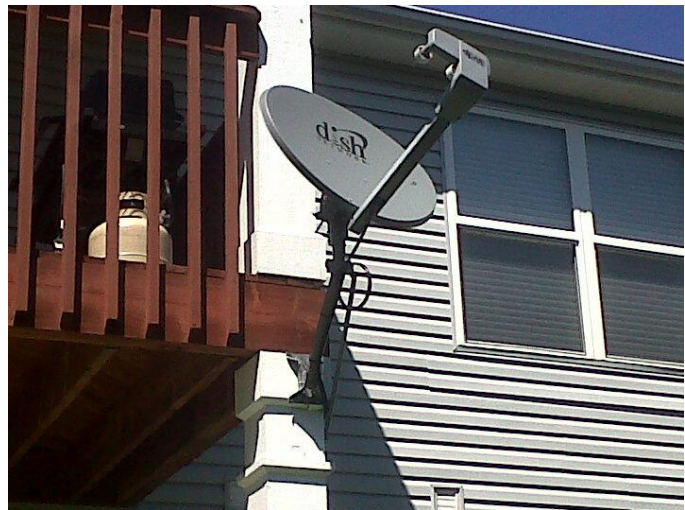


1.  
To be approved, an installation on a deck must comply with the following: the deck must belong to the unit for which the dish is being installed; and the cabling from the dish must be connected to the cable network interface box which was installed during the original construction of the unit. No excess cables will be permitted to hang.



2.  
To be approved, an installation on a deck must comply with the following: the deck must belong to the unit for which the dish is being installed; and the cabling from the dish must be connected to the cable network interface box which was installed during the original construction of the unit. Cables must be run neatly to the interface boxes and buried and concealed when applicable.



3.  
To be approved, an installation on a deck must comply with the following: the deck must belong to the unit for which the dish is being installed; the cabling from the dish must be connected to the cable network interface box which was installed during the original construction of the unit. All cables running along the ground to the interface box must be properly buried and concealed.



4.

To be approved, an installation on a building soffit must comply with the rules and regulations; the soffit on which the dish is being installed must be part of the unit owner's; may not be installed no more than midway to the front of the building; the cabling from the dish must run neatly down the side of the building (preferably behind a gutter, but NOT fed through the gutter) and connect through the interface box.



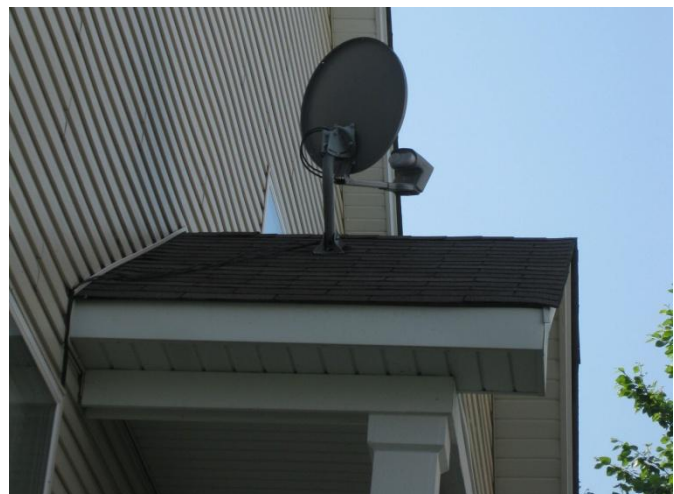
5.

To be approved, an installation on a pole in the ground of a unit must comply with the rules and regulations; must be placed in an existing planting bed; must be in the rear or side of a unit (no more than midway to the front of the building if placed on the side); and the cabling from the dish must be buried and connected to the cable interface box



6.

No satellite dishes are permitted to be installed on the roof or soffit above any side entries.



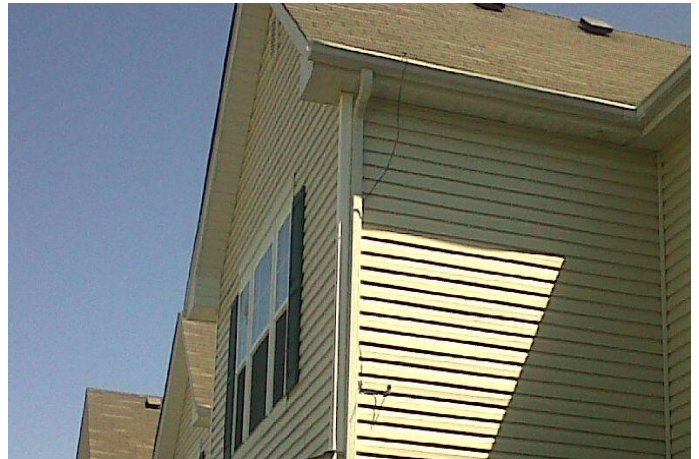
7.

Satellite dishes are not permitted to be installed on rooftops anywhere on the property.



8.

Any and all cables from the satellite dish must be connected through the existing cable interface; no homeowners will be permitted to drill holes into the building siding and/or walls to feed cable through; no cables are permitted to run any length of the rooftop.



9.

All cables must be neatly concealed behind the gutters and buried in the ground where applicable. Cables will not be permitted to hang freely.



10.

Satellite dishes are not permitted to be installed in the front of any unit.



11.

Satellite dishes are not permitted to be mounted to any existing vent pipes on the roof.



12.

Satellite dishes are not permitted to be installed in the front of any unit.

